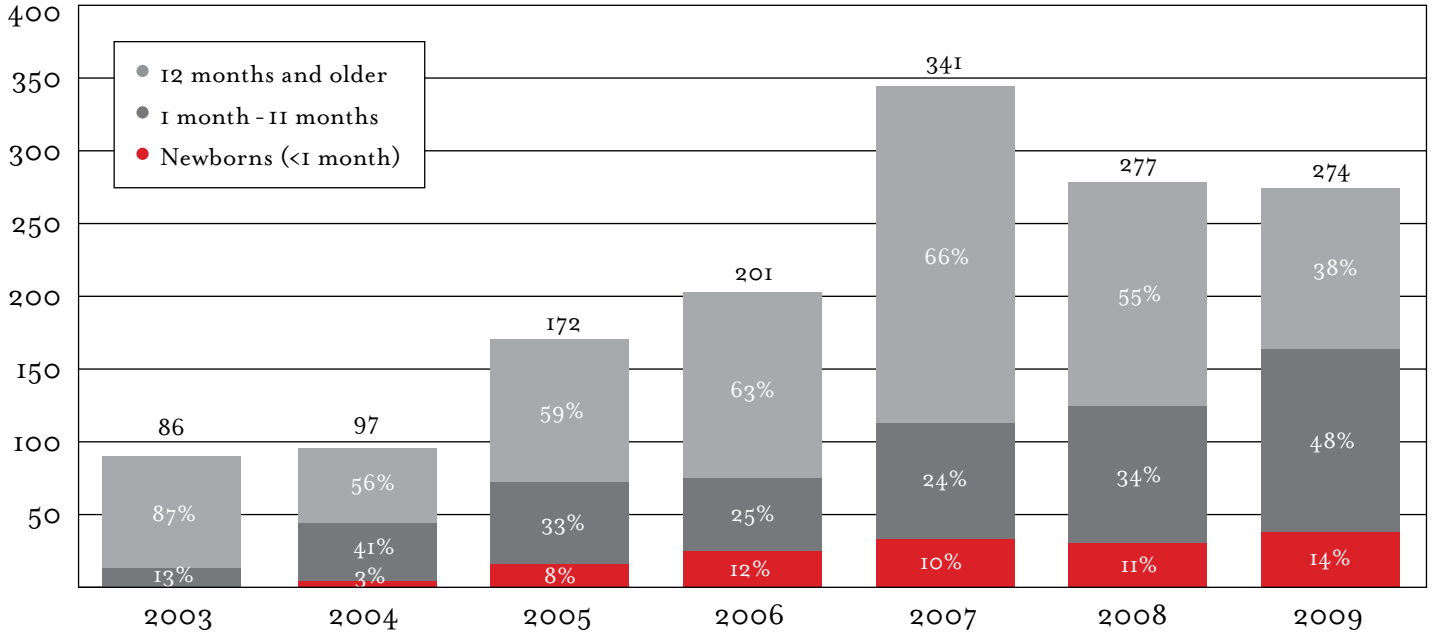
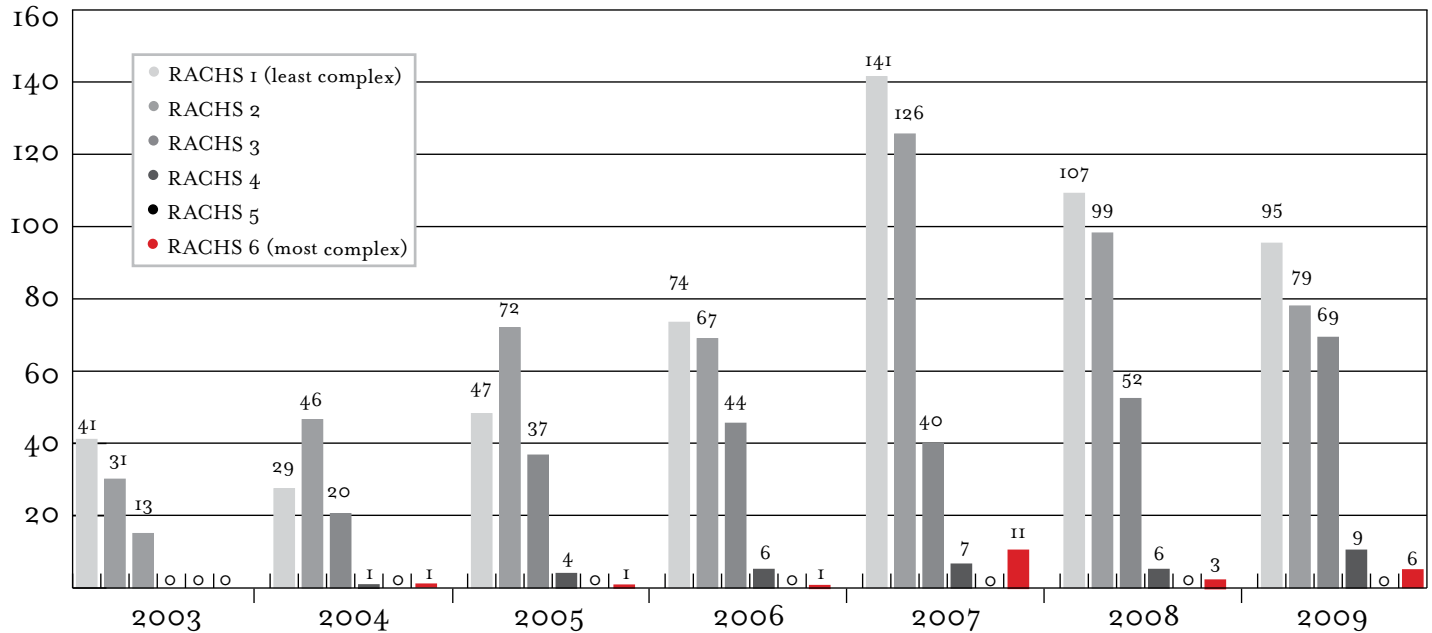


# INTO the HEARTLAND CAMPAIGN

**Samara Regional Cardiac Center: cardiac surgical procedures only; catheter-based procedures not included**



**Samara Regional Cardiac Center: cardiac surgical procedures, complexity by RACHS-1 score**



RACHS-1 = Risk Adjustment for Congenital Heart Surgery, a method of adjusting for case-mix differences when comparing institutional mortality after surgery for CHD. This industry standard places basic congenital open heart procedures into six risk categories. Not all operations can be assigned a RACHS score. Most heart defects fall into categories 1-4.